



MONTANA
VIEW



WELCOME

Welcome to luxurious contemporary high-rise living nestled in the Lush rolling hills of Santa Cruz at Montana View.

As part of the Montana Estate residential development, Montana View is designed to enjoy community living with a secluded premium experience. The development features 96 well appointed 3 bedroom apartments.

MAP



Traveling along the Saddle Road, the site sits south of the Santa Cruz Green Market. It can be accessed comfortably within 20mins of Port of Spain or San Juan.





ABOUT

Montana View features two (2) 48 unit apartment buildings (a total of 96 units), Tower 1 and Tower 2 are linked by a pool deck and terrace with small play area for children.

Sitting at two different levels on the sloping hillside, creates a unique experience of the property.

THE GOOD LIFE STARTS HERE!



AMENITIES

1,300 sqft of living space including balcony.

Two (2) levels of parking per building

2 spaces per dwelling

Rent-able storage units

Two (2) Elevators per building

24 hr. Secure property, with camera surveillance

Lush Santa Cruz environment.

Beautifully Landscape areas

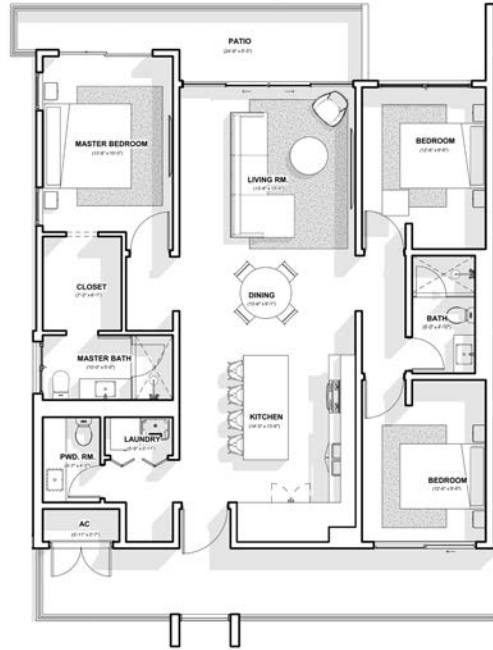
Visitor Parking

Communal Pool and Deck with Recreation space

Back-up generator for common services

FLOOR PLANS

END UNIT

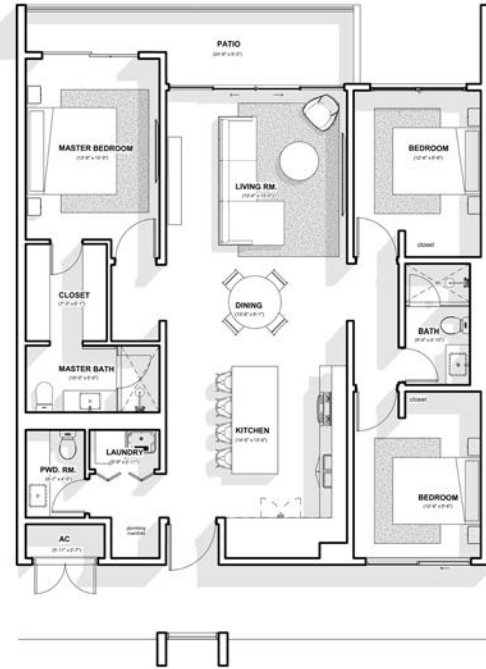


Kitchen (14'5" x 13'6")
Dining (13'6" x 9'1")
Living Room (13'6" x 13'0")
Powder Room (6'7" x 4'5")
Laundry (5'9" x 2'11")
Master Bath (10'0" x 5'0")
Walk-in Closet (7'3" x 6'1")
Primary (Master) Bedroom (13'6" x 10'0")
Bedroom 1 (12'6" x 9'6")
Bath (9'0" x 4'10")
Bedroom 2 (12'6" x 9'6")
Patio (26'6" x 5'5")



FLOOR PLANS

MIDDLE UNIT



Kitchen (14'5" x 13'6")
Dining (13'6" x 9'1")
Living Room (13'6" x 13'0")
Powder Room (6'7" x 4'5")
Laundry (5'9" x 2'11")
Master Bath (10'0" x 5'0")
Walk-in Closet (7'3" x 6'1")
Primary (Master) Bedroom (13'6" x 10'0")
Bedroom 1 (12'6" x 9'6")
Bath (9'0" x 4'10")
Bedroom 2 (12'6" x 9'6")
Patio (24'6" x 5'5")





ENJOY THE POOL DECK & PLAY AREA

The outdoor communal space features a swimming pool deck, gazebo, and small play area.



KITCHEN, DINING & LIVING

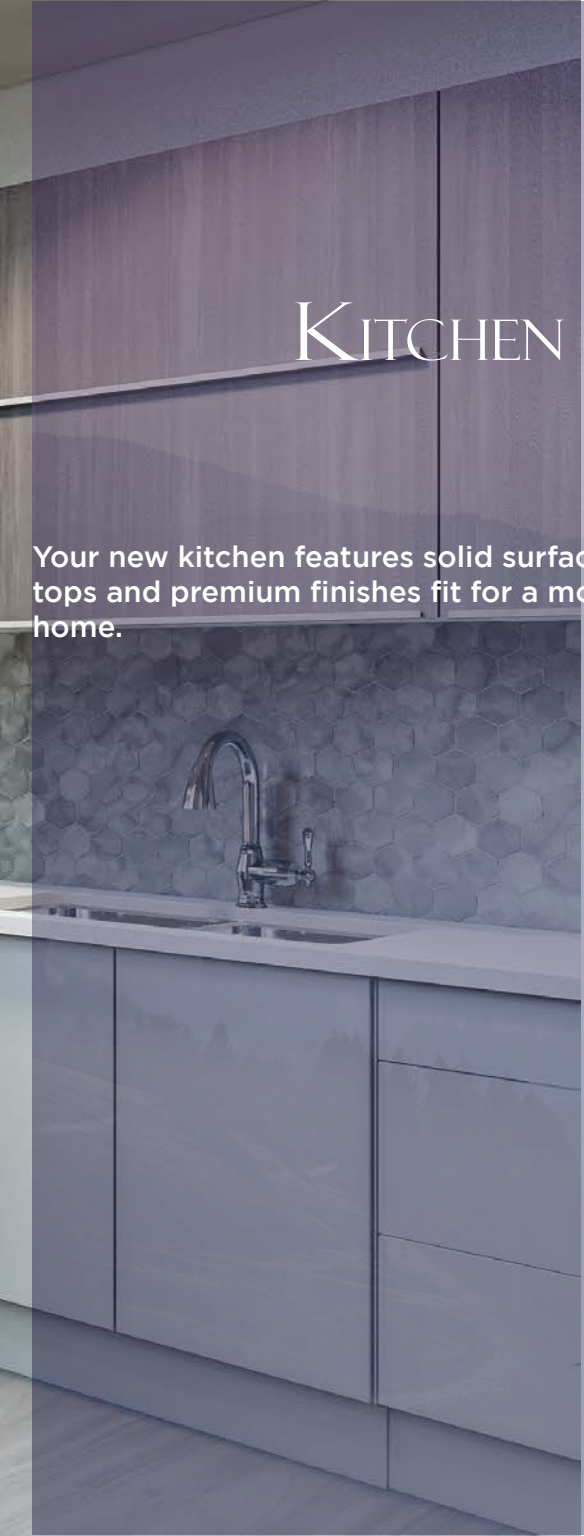
The living space, features modern finishes. Air-conditioning, and a large sliding door towards expansive views of the Santa Cruz hills.





KITCHEN

Your new kitchen features solid surface counter-tops and premium finishes fit for a modern luxurious home.



MASTER BEDROOM

Master (primary) bedroom
features, walk-in closet and en-
suite-bath







DEVELOPER

stein
carrington
architect

ARCHITECTS